

REV.	REMARK	DATE	SIGN.
◇	REVISE CUSTOMER P/N	09/02/'13	Sino

**MATERIAL RoHS COMPLIANT:**

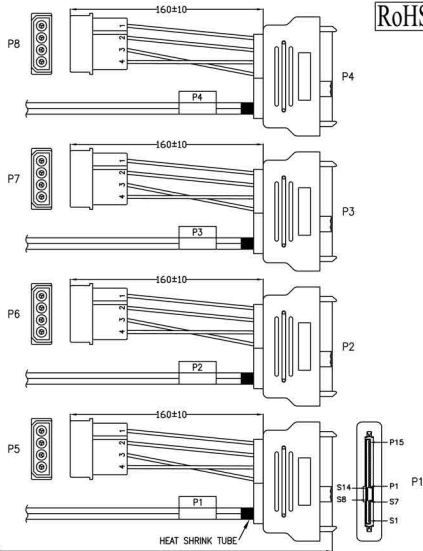
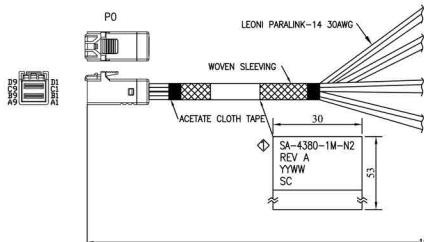
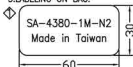
**1.CABLE:**

CONDUCTOR: 30 AWG SOLID SILVER PLATED COPPER.  
 INSULATION: SKIN-FOAM-SKIN  
 PAIR: 2 WIRES, WH AND YE PARALLEL.  
 PAIR DRAIN WIRE: #0.2 mm (32AWG) TINNED COPPER.  
 PAIR SHIELD: ALUMINUM FOIL OVERLAPPED, ALU INSIDE.  
 DIFFERENTIAL IMPEDANCE: 100±5 OHM.

**2.CONNECTOR:**

P0: Mini SAS HD 4 CABLE PLUG (SFF-8643)  
 (1) P.C.B: 4 LAYERS, GOLD PLATING ON CONTACT PADS, WITHOUT CARBON  
 (P/N: MPCB-040115LF REV.A / MPCB-040116LF REV.A)  
 (2) HOUSING: PBT, BLACK.  
 P1-P4: SAS DRIVE REC.(SFF-8680)(MSAS-F29S001G)  
 P5-P8: 4 POSITION DC POWER PLUG  
 POWER CABLE: UL 1007 18AWG 80°C 300V

**3.LABELING ON BAG:**



RoHS

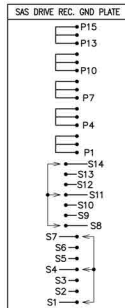
Serial Cables, LLC

DESC.	Mini SAS HD 4i TO 4*SAS drive cable rec. with power cable ass'y	APPROVED	CHECKED	DESIGNED	TOLERANCE	SCALE	*	UNIT	mm	◇
P/N	UASS-RC005926	CUSTOMER P/N	SA-4380-1M-N2	Sino		DATE	09/02/'13	DWG NO:	DWG\RC\5926	

1	2	3	4	5	6	7	8	9
REV.	REMARK	DATE	SIGN.					

WIRING DIAGRAM						
Mini SAS HD 4i (HOST)(PO)		SAS DRIVE CABLE REC.(TARGET)		4P POWER PLUG		
PIN	SIGNAL	rec.	PIN	SIGNAL	plug	PIN SIGNAL
B4	RX0+	P1	S6	TP+	P5	1 +12V
B5	RX0-		S5	TP-		2 GND
D5	TX0-		S3	RP-		4 +5V
D4	TX0+		S2	RP+		3 GND
GND GROUP			S1,S4,S7	GND		
A4	RX1+	P2	S6	TP+	P6	1 +12V
A5	RX1-		S5	TP-		2 GND
C5	TX1-		S3	RP-		4 +5V
C4	TX1+		S2	RP+		3 GND
GND GROUP			S1,S4,S7	GND		
B7	RX2+	P3	S6	TP+	P7	1 +12V
B8	RX2-		S5	TP-		2 GND
D8	TX2-		S3	RP-		4 +5V
D7	TX2+		S2	RP+		3 GND
GND GROUP			S1,S4,S7	GND		
A7	RX3+	P4	S6	TP+	P8	1 +12V
A8	RX3-		S5	TP-		2 GND
C8	TX3-		S3	RP-		4 +5V
C7	TX3+		S2	RP+		3 GND
GND GROUP			S1,S4,S7	GND		
			S13,P14,P15	+12V		
			P10,P11,P12	GND		
			P7,P8,P9	+5V		
			P4,P5,P6	GND		

GND GROUP:  
A3,A6,A9,B3,B6,B9,  
C3,C6,C9,D3,D6,D9.



Serial Cables, LLC	DESC.	Mini SAS HD 4i TO 4*SAS drive cable rec. with power cable ass'y			APPROVED	CHECKED	DESIGNED	TOLERANCE	SCALE	*	UNIT	mm	
	P/N	UA55-RC005926	CUSTOMER P/N				Sino		DATE	03/07/13	DWG NO:	DWG\RC\5926	