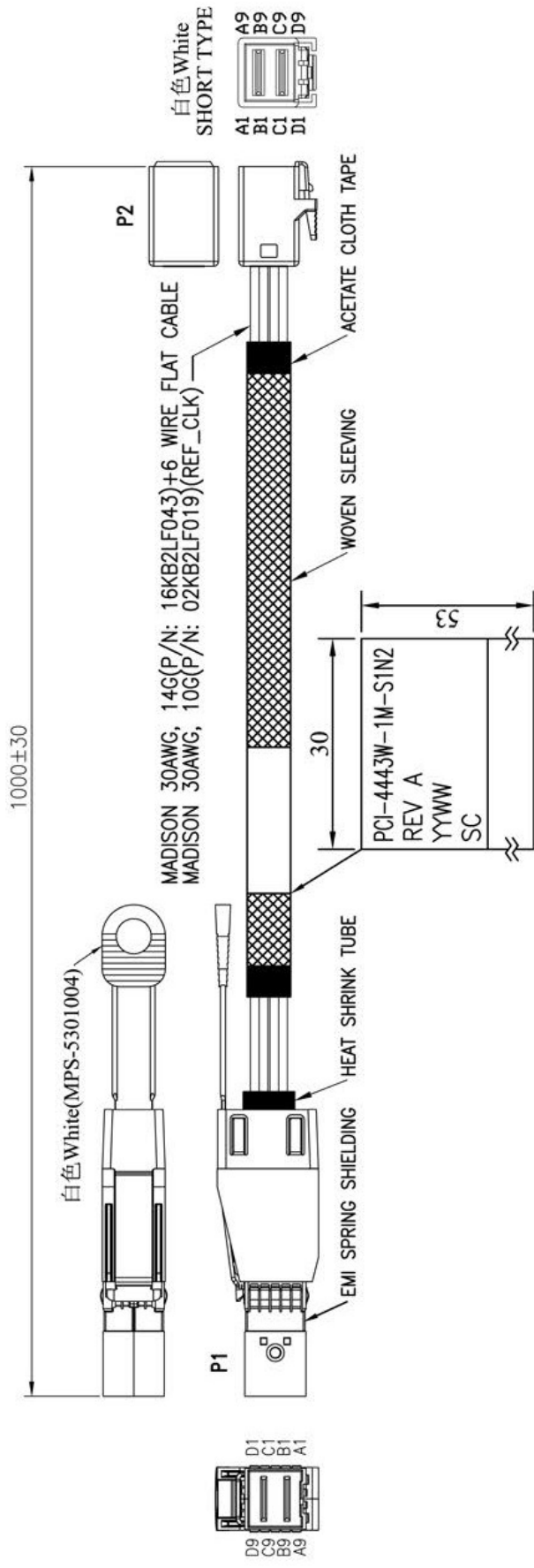


RoHS

REV.	REMARK	DATE	SIGN.



MATERIAL RoHS COMPLIANT:

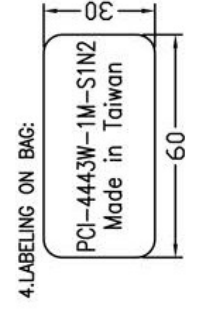
1.CABLE: MADISON 30AWG, 14G(P/N: 16KB2LF043)
 CONDUCTOR: 30AWG SOLID SILVER PLATED COPPER.
 INSULATION: FOAM POLYOLEFIN.
 PAIR: 2 SINGLES LAID FLAT AND PARALLEL.
 PAIR DRAIN WIRE: 30AWG SOLID SILVER PLATED COPPER.
 PAIR SHIELD: ALUMINUM/POLYESTER TAPE, ALUMINUM SIDE FACING IN, 25% OVERLAP.
 INNER SHIELD: ALUMINUM/POLYESTER TAPE, ALUMINUM SIDE FACING OUT, 25% OVERLAP.
 DIFFERENTIAL IMPEDANCE: 100±5 OHMS @1DR
 UL LISTING: TYPE CL2 AS SPECIFIED IN ARTICLE 725 OF THE NATIONAL ELECTRICAL CODE.

2.CABLE: MADISON 30AWG, 10G(P/N: 02KB2LF019)

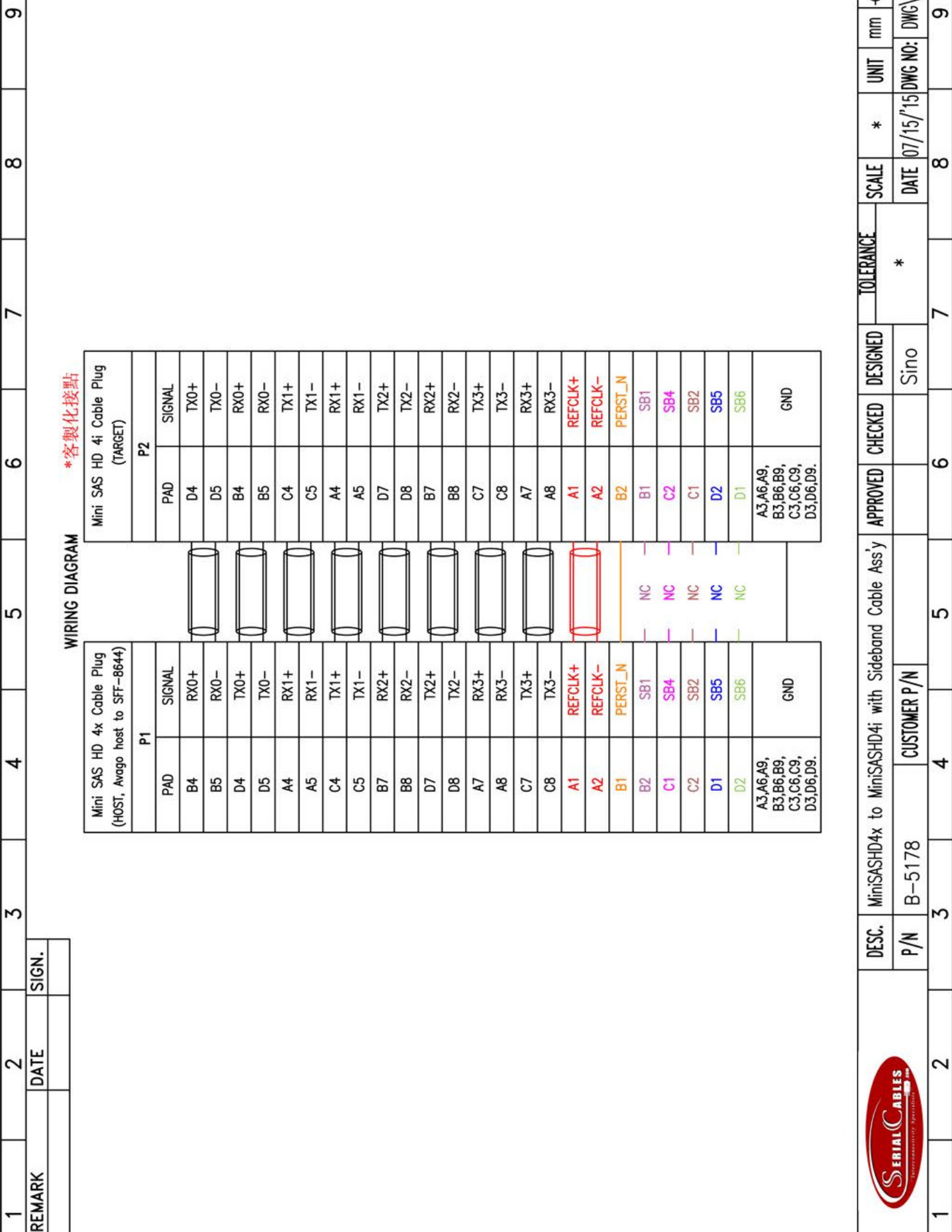
3.CONNECTOR:

P1: SFF-8644 CABLE PLUG
 (1) P.C.B: GOLD PLATING ON CONTACT PADS.
 (P/N: MPCB-060003LF REV.A / MPCB-060004LF REV.A)
 (2) LATCH: STAINLESS STEEL
 (3) BACKSHELL- ZINC DIE CASTING HOOD/ NICKEL PLATING
 (4) PULL TAB: NYLON UL94V-0, COLOR: WHITE(MPS-5301004)
 (5) EMI SPRING SHIELDING

P2: SFF-8643 SHORT TYPE CABLE PLUG
 (1) P.C.B: 4 LAYERS, GOLD PLATING ON CONTACT PADS, WITHOUT CARBON
 (P/N: MPCB-040125LF REV.A / MPCB-040126LF REV.A)
 (2) HOUSING: PBT, WHITE.



DESC.	MimiSASHD4x to MimiSASHD4i with Sideband Cable Assy	APPROVED	CHECKED	DESIGNED	TOLERANCE	SCALE	*	UNIT	mm
P/N	B-5178			Sino					
CUSTOMER P/N	PCI-4443W-1M-S1N2								
							DATE	07/14/15	DWG NO: DWG B\5178



WIRING DIAGRAM
*客製化接點

Mini SAS HD 4x Cable Plug (HOST, Avago host to SFT-8644)		Mini SAS HD 4i Cable Plug (TARGET)	
P1		P2	
PAD	SIGNAL	PAD	SIGNAL
B4	RX0+	D4	TX0+
B5	RX0-	D5	TX0-
D4	TX0+	B4	RX0+
D5	TX0-	B5	RX0-
A4	RX1+	C4	TX1+
A5	RX1-	C5	TX1-
C4	TX1+	A4	RX1+
C5	TX1-	A5	RX1-
B7	RX2+	D7	TX2+
B8	RX2-	D8	TX2-
D7	TX2+	B7	RX2+
D8	TX2-	B8	RX2-
A7	RX3+	C7	TX3+
A8	RX3-	C8	TX3-
C7	TX3+	A7	RX3+
C8	TX3-	A8	RX3-
A1	REFCLK+	A1	REFCLK+
A2	REFCLK-	A2	REFCLK-
B1	PERST_N	B2	PERST_N
B2	SB1	B1	SB1
C1	SB4	C2	SB4
C2	SB2	C1	SB2
D1	SB5	D2	SB5
D2	SB6	D1	SB6
A3,A6,A9, B3,B6,B9, C3,C6,C9, D3,D6,D9.	GND	A3,A6,A9, B3,B6,B9, C3,C6,C9, D3,D6,D9.	GND



DESC. MiniSASHD4x to MiniSASHD4i with Sideband Cable Assy

P/N B-5178

CUSTOMER P/N

APPROVED
CHECKED
DESIGNED
Sino

TOLERANCE
*

SCALE
DATE 07/15/15 DWG NO: DWG\B\5178

UNIT mm
DWG\B\5178